

Calibrating Monitors

From Labops-wiki

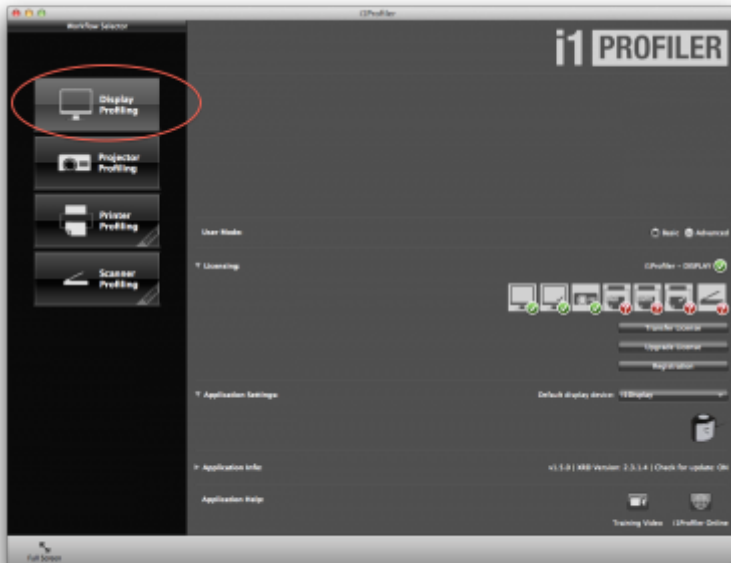
PEL Labbies should calibrate monitors frequently - at least once every other week.

Before Calibrating:

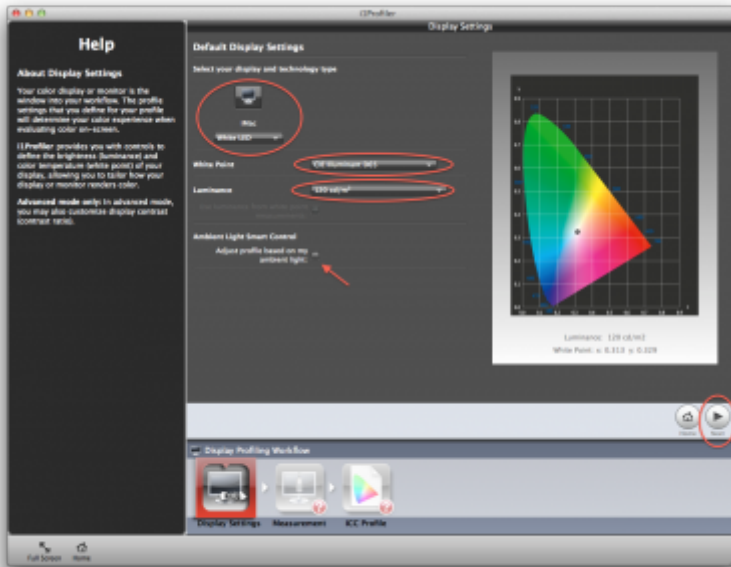
- It is helpful if the computer monitor has been on for at least 30 minutes before calibrating (for the light source to get up to proper temperature).
- Make sure the monitor screen has been cleaned with screen wipes or a cloth damp with water. Do not attempt to calibrate over a smudged spot.
- If you are planning to calibrate the entire lab, it takes about 2-3 minutes to do each screen.
- Log into each computer you plan to calibrate.
- Finally, you must delete the old display profile before creating a new one. To do this, open Finder and navigate to Macintosh HD > Library > ColorSync > Profiles > Right-click PEL.icc and select Move to Trash. Empty the Trash when finished.

To Calibrate:

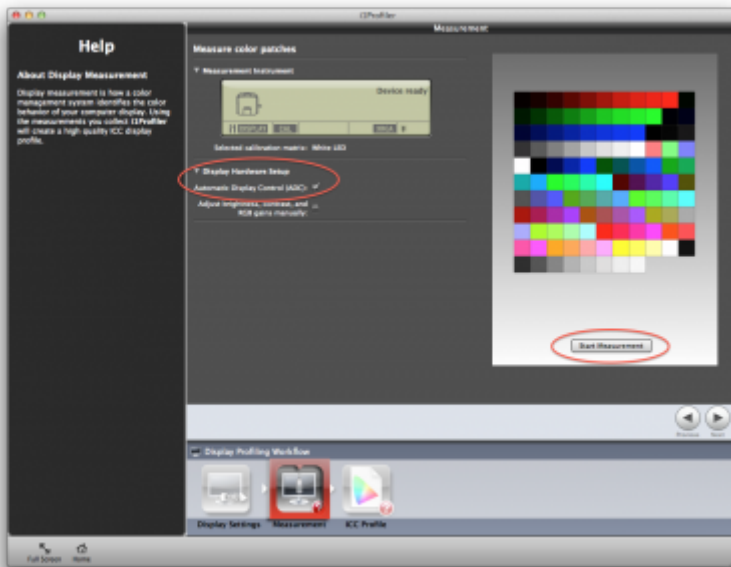
- Use small i1 Display Pro calibrator in PEL closet.
- Plug it into computer.
- Set counter weight so it hangs over the back of the computer. Adjust so calibrator hangs in middle of screen.
- Rotate calibrator so the eye is placed flat against the middle of the monitor screen.
- Open software (i1 Profiler).
- Click DISPLAY PROFILING (icon on left).



- Choose the type of computer you are using (PEL = iMac, White LED).
- Set the White Point to CIE Illuminant D65.
- Set the Luminance to 120.
- Do not check the profile option for Ambient Light Smart Control (light in the lab changes all the time, time of day, location, etc.)



- Hit Next.
- Under 'Display Hardware Setup' - check off ADC.
- Click 'Start Measurement'.



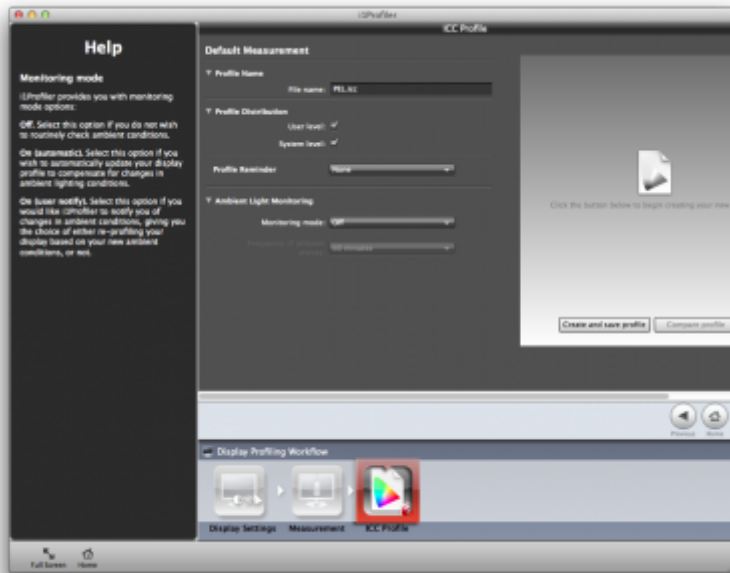
- Open diffuser and rotate it. Pictures on the screen will show you steps to set it up.



- Click Ok, then Next. Calibration will start (screen will flash). Takes about 2-3 minutes per computer.
- When complete, the screen will ask you to click the calibrator back together and hit NEXT on screen.



- Under 'Profile Name' - enter the File Name as: PEL.icc
- Under 'Profile Distribution' - check off both USER LEVEL and SYSTEM LEVEL
- Set 'Profile Reminder' to None.
- Set 'Ambient Light Monitoring' to Off.
- Click Create and save profile.



- Close out of software and go to the Mac's System Preferences > Displays > Color
- You should see the saved profile (PEL.icc) in the list.

Next you need to run the Brightness Scripts.

Retrieved from "http://wiki.labops.emerson.edu/index.php?title=Calibrating_Monitors&oldid=12658"

-
- This page was last modified on 3 February 2017, at 12:34.